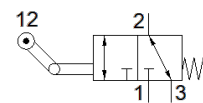


roller lever valve VMEF-KT-M32-M-G18

Part number: 8049241

FESTO



Data sheet

Feature	Value
Valve function	3/2-way, monostable
Type of actuation	mechanical
Design structure	Toggle lever Poppet seat
Type of reset	mechanical spring
Instructions for use	Risk of pinching
Sealing principle	soft
Assembly position	Any
Type of piloting	direct
Flow direction	reversible
Operating medium	Compressed air in accordance with ISO8573-1:2010 [7:-:-]
Corrosion resistance classification CRC	1 - Low corrosion stress
Product weight	227 g
Mounting type	with through hole
Pneumatic connection, port 1	G1/8
Pneumatic connection, port 2	G1/8
Pneumatic connection, port 3	G1/8
Materials note	Conforms to RoHS
Material mounting adaptor	steel, galvanized
Material seals	NBR
Material housing	Anodised wrought aluminium alloy